

INSERT

PROJECT

996_NANUK

PRODUCT

00996_NANUK a.05

DWG ID

STATUS

YOUR SIGNATURE IS REQUIRED FOR APPROVAL BEFORE ANY RELEASE OF PRODUCTION DRAWINGS

SIGNATURE

DATE

TOLERANCES

CUTOUTS +/- 1/16

OVERALL FOAM THICKNESS & CAVITY DEPTHS +/- 1/8

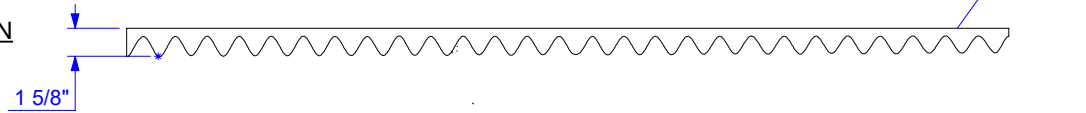
GLUED TO CASE TOP ☐ BASE ☐ VELCRO ☐ EXTRA ☐

REVISIONS

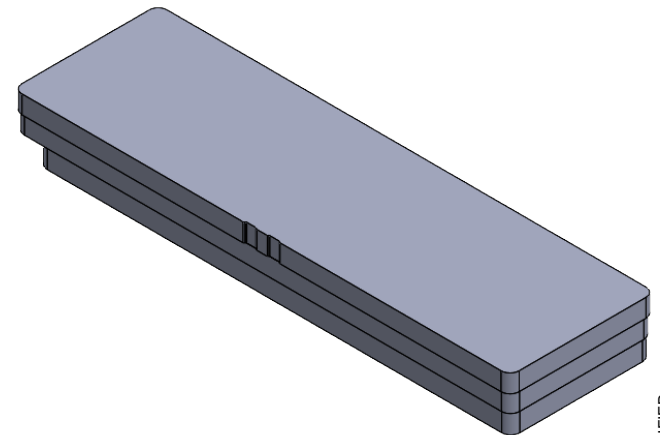
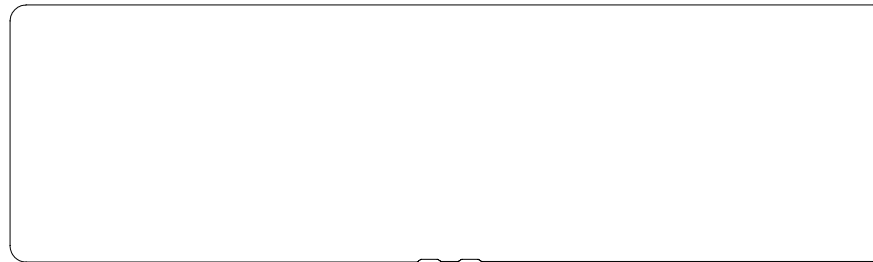
REV.	DESCRIPTION	DATE	INIT.
a.03	GENERAL MODIFICATION	2023-02-28	WV
a.04	GENERAL MODIFICATION	2023-04-06	WV

LID TRAY - ELEVATION

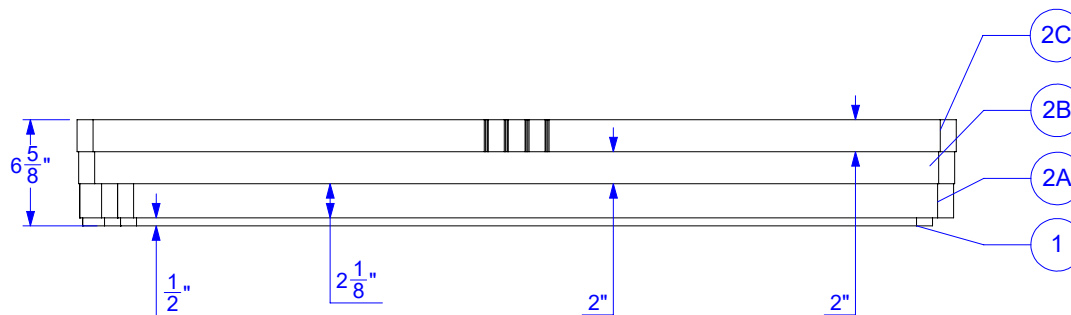
CV STANDARD
1-99603



BASE TRAY



BASE TRAY - ELEVATION



FOAM DENSITY MAY VARY.
DIMENSIONS ARE IN INCHES UNLESS OTHERWISE SPECIFIED

PROPRIETARY AND CONFIDENTIAL

THE INFORMATION CONTAINED IN THIS DRAWING IS THE SOLE & EXCLUSIVE PROPERTY OF PLASTICASE INC.
 ANY REPRODUCTION IN PART OR WHOLE WITHOUT THE WRITTEN PERMISSION OF PLASTICASE INC. IS PROHIBITED.

DO NOT SCALE DRAWING
 SHEET SCALE 1:10

REPRESENTATIVE

David Vidal
 DESIGNER

2023-04-28
 DATE

1/7



1059, boulevard des Entreprises Ouest
Terrebonne, QC Canada J6Y 1V2
Tel 450-628-1006 1.800.783.6883
Fax 450-628-7801 1.888.783.6883
www.plasticase.com

INSERT

PROJECT

YOUR SIGNATURE IS REQUIRED FOR APPROVAL BEFORE ANY RELEASE OF PRODUCTION DRAWINGS

SIGNATURE

996_NANUK

PRODUCT

00996_NANUK a.05

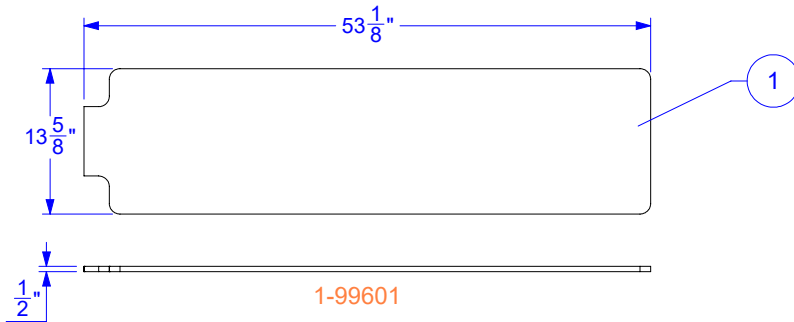
DWG ID

STATUS

TOLERANCES

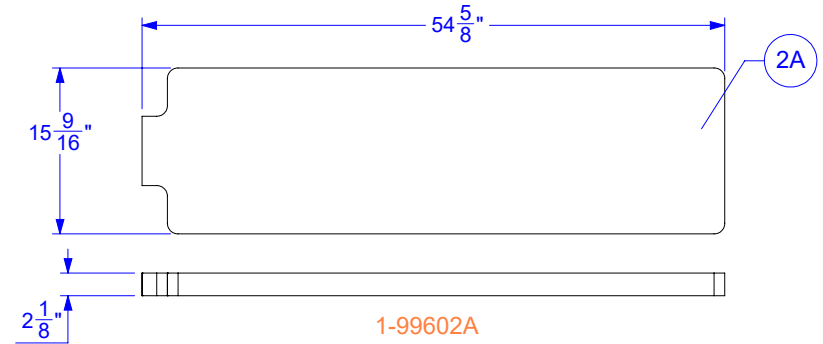
CUTOUTS +/- 1/16

OVERALL FOAM THICKNESS & CAVITY DEPTHS +/- 1/8



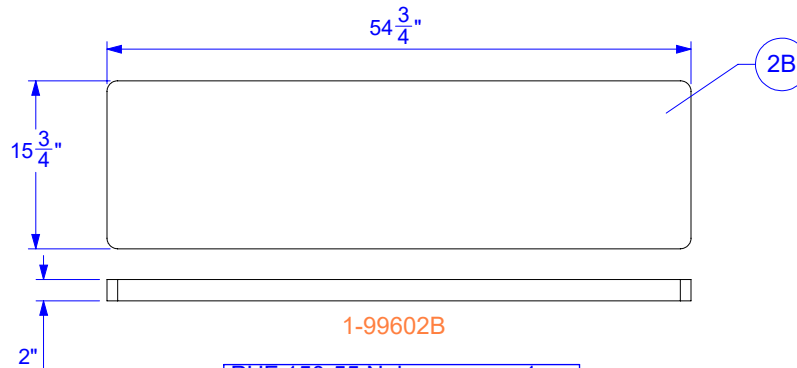
1-99601

PUF 150-55 Noir
MATERIAL 1 QTY



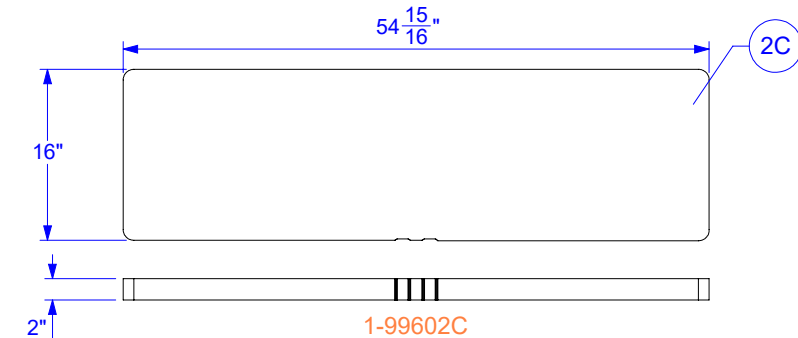
1-99602A

PUF 150-55 Noir
MATERIAL 1 QTY



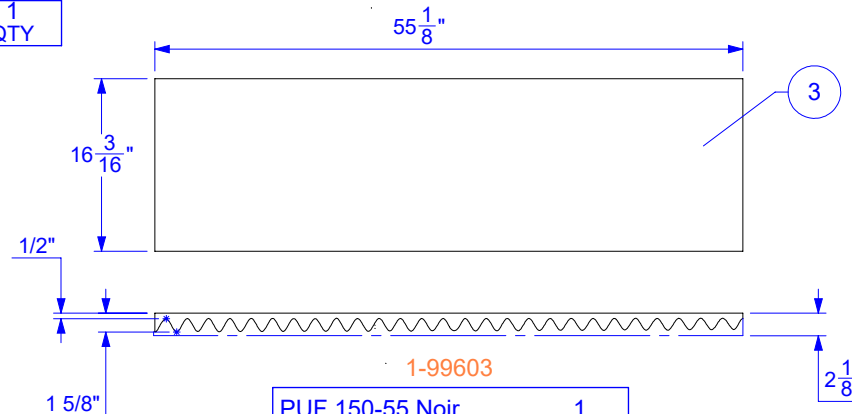
1-99602B

PUF 150-55 Noir
MATERIAL 1 QTY



1-99602C

PUF 150-55 Noir
MATERIAL 1 QTY



1-99603

PUF 150-55 Noir
MATERIAL 1 QTY

FOAM DENSITY MAY VARY.
DIMENSIONS ARE IN INCHES UNLESS OTHERWISE SPECIFIED

PROPRIETARY AND CONFIDENTIAL

THE INFORMATION CONTAINED IN THIS DRAWING IS THE SOLE & EXCLUSIVE PROPERTY OF PLASTICASE INC.
ANY REPRODUCTION IN PART OR WHOLE WITHOUT THE WRITTEN PERMISSION OF PLASTICASE INC. IS PROHIBITED.

DO NOT SCALE DRAWING
SHEET SCALE 1:16

REPRESENTATIVE

David Vidal
DESIGNER

2023-04-28
DATE

2/7