



1059, boulevard des Entreprises Ouest
 Terrebonne, QC Canada J6Y 1V2
 Tel 450-628-1006 1.800.783.6883
 Fax 450-628-7801 1.888.783.6883
 www.plasticase.com

CUBED FOAM INSERT

903_NANUK

00903FV_NANUK

p.00

PROJECT

PRODUCT

DWG ID

STATUS

YOUR SIGNATURE IS REQUIRED FOR APPROVAL BEFORE ANY RELEASE OF PRODUCTION DRAWINGS

SIGNATURE

DATE

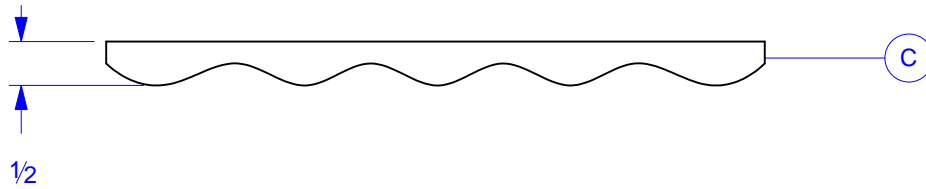
DESCRIPTION CHANG.

DATE

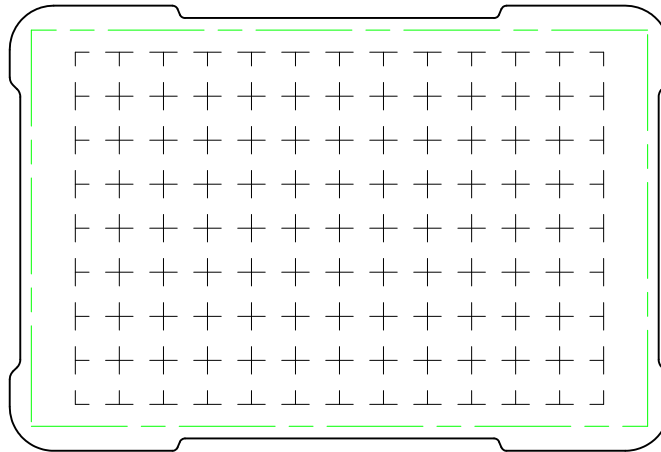
IP
INIT

ASSEMBLY

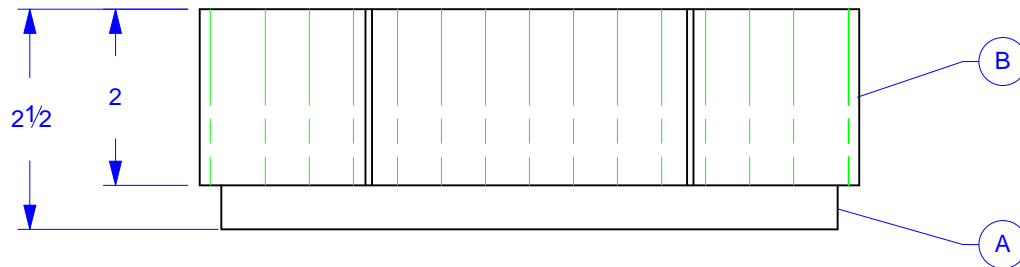
LID EGGSHELL



BASE TRAY



BASE TRAY - ELEVATION



GLUED TOP BASE VELCRO XTRA

SILKSCREEN PRINT PLAIN

LABEL CUSTOM STD NONE

BOX PRINT PLAIN BAG PRINT PLAIN

QUANTITY 250, 500

COLOR -

TOLERANCES
 CUTOUTS +/- 1/16
 OVERALL FOAM THICKNESS & CAVITY DEPTHS +/- 1/8



FOAM DENSITY MAY VARY
 DIMENSIONS ARE IN INCHES UNLESS OTHERWISE SPECIFIED

THE INFORMATION CONTAINED IN THIS DRAWING IS THE SOLE AND EXCLUSIVE PROPERTY OF PLASTICASE INC.
 ANY REPRODUCTION IN PART OR WHOLE WITHOUT THE WRITTEN PERMISSION OF PLASTICASE INC. IS PROHIBITED

TO FIT
SCALE

AS REQUESTED
CONCEPT

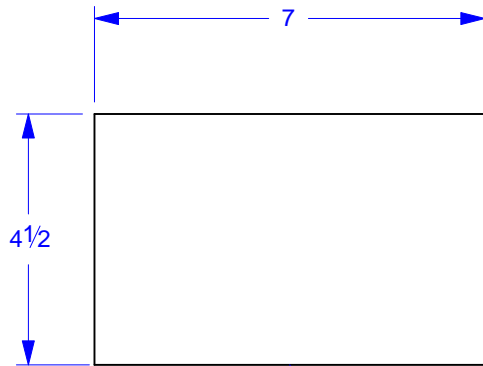
Frank Vitiello
REPRESENTATIVE

Vanessa Moscato
DESIGNER

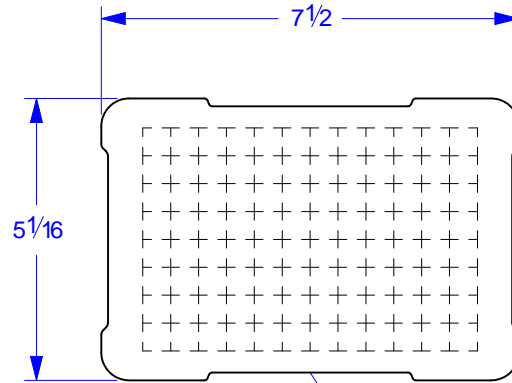
2012.04.05
DATE INIT

1/3

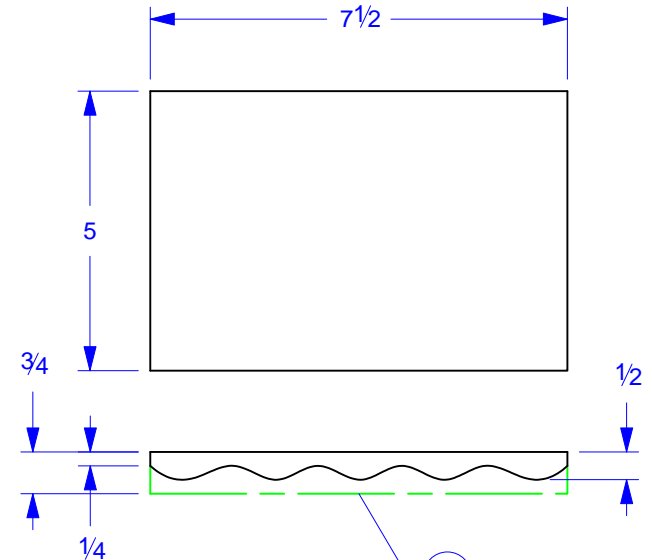
LAYOUT



A



B



C

PUF 1.5 BLACK 1/2" THICK		
MATERIAL		
-	23"	1
DETAILS	LINEAR IN	QTY

PUF 1.5 BLACK 2" THICK		
MATERIAL		
-	91"	1
DETAILS	LINEAR IN	QTY

PUF 1.5 BLACK CV 3/4" THICK		
1/4" BASE		
MATERIAL		
-	-"	1
DETAILS	LINEAR IN	QTY

FOAM DENSITY MAY VARY
 DIMENSIONS ARE IN INCHES UNLESS OTHERWISE SPECIFIED



1059, boulevard des Entreprises Ouest
 Terrebonne, QC Canada J6Y 1V2
 Tel 450-628-1006 1.800.783.6883
 Fax 450-628-7801 1.888.783.6883
 www.plasticase.com

CUBED FOAM INSERT

PROJECT

903_NANUK

PRODUCT

00903FV_NANUK

DWG ID

p.00

STATUS

IP

INIT

YOUR SIGNATURE IS REQUIRED FOR APPROVAL BEFORE ANY RELEASE OF PRODUCTION DRAWINGS

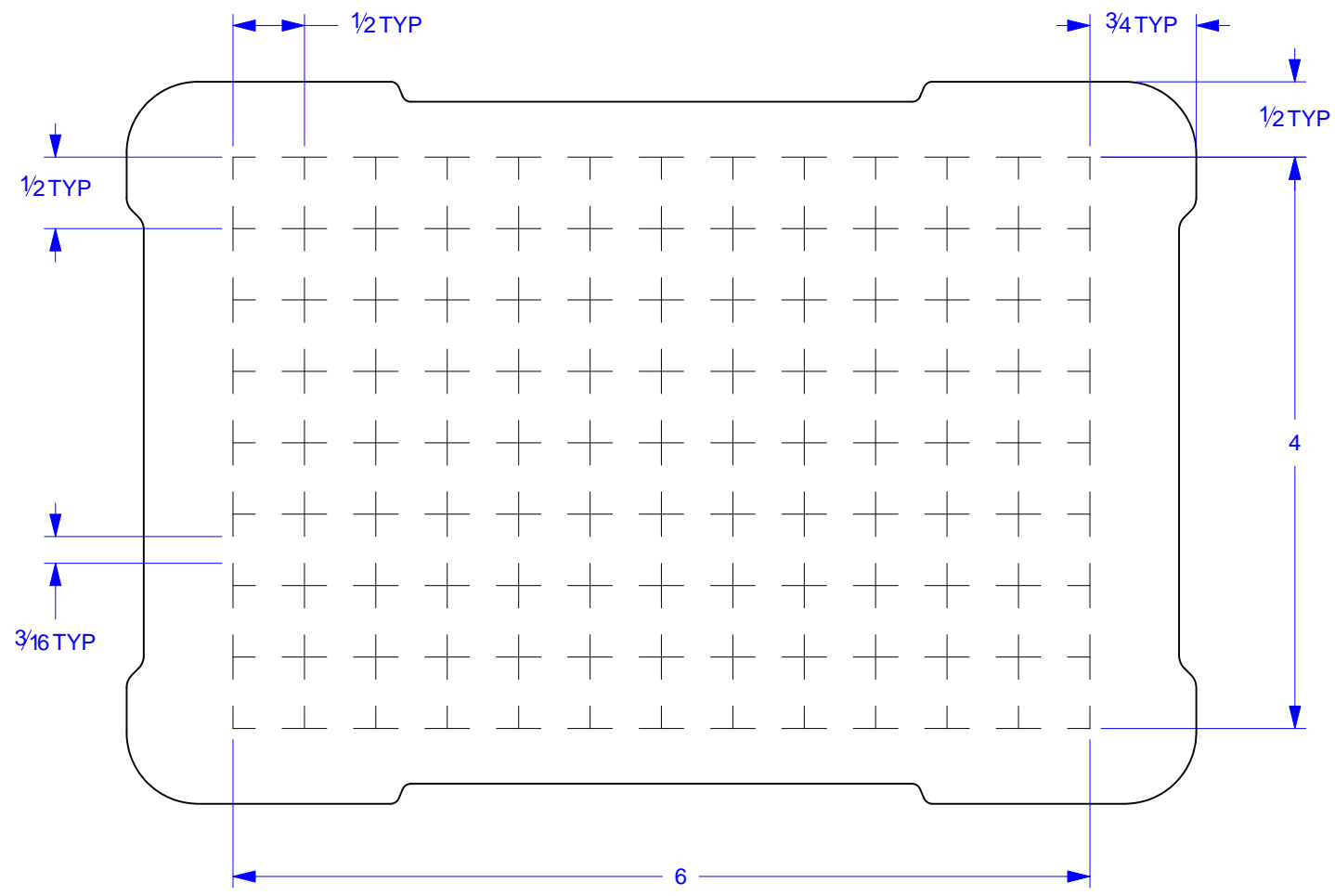
SIGNATURE

DATE

DESCRIPTION CHANG.

DATE

DETAILS



FOAM DENSITY MAY VARY
 DIMENSIONS ARE IN INCHES UNLESS OTHERWISE SPECIFIED

THE INFORMATION CONTAINED IN THIS DRAWING IS THE SOLE AND EXCLUSIVE PROPERTY OF PLASTICASE INC.
 ANY REPRODUCTION IN PART OR WHOLE WITHOUT THE WRITTEN PERMISSION OF PLASTICASE INC. IS PROHIBITED

TO FIT
 SCALE

AS REQUESTED
 CONCEPT

Frank Vitiello
 REPRESENTATIVE

Vanessa Moscato
 DESIGNER

2012.04.05
 DATE INIT

3/3